

# FaceStation 2

SMART FACE RECOGNITION TERMINAL



## FaceStation 2

Suprema FaceStation 2 is the most advanced face recognition terminal providing loads of the world's best features. Powered by Suprema's latest innovation in facial biometrics, FaceStation 2 offers unrivalled matching speed, accuracy and level of security. With Suprema's patented optic engineering, FaceStation 2 achieves up to 25,000 lx of operating illuminance which in turn, brings all-round confidence regardless of lighting conditions. Packed in an ergonomically-designed structure, FaceStation 2 provides exceptional performance and usability for diverse access control and time attendance sites, large or small.

# FaceStation 2 SMART FACE RECOGNITION TERMINAL

## Features



### Ultra Performance

- Matching Speed: 1:3,000 match/sec
- \* Group Matching: 1:5,000 match/sec
- User Capacity: Max 30,000 users (1:1), 3,000 users (1:N)



### Highest Operating Illuminance

- Operating illuminance from 0 lx to 25,000 lx
- Highest operating illuminance available
- Covers complete darkness to all indoor lighting conditions



### Enhanced Security

- Live face detection: IR-based image analysis to prevent spoofing by printed images and LCDs
- Enhanced security by Android 5.0 Lollipop
- High quality Image log



### Multi RFID Card Reading

- LF(125KHz), HF(13.56MHz) dual-band
- Reads all card types that HID multiCLASS supports (EM/HID Prox/MIFARE/iCLASS/DESFire/FeliCa/NFC)



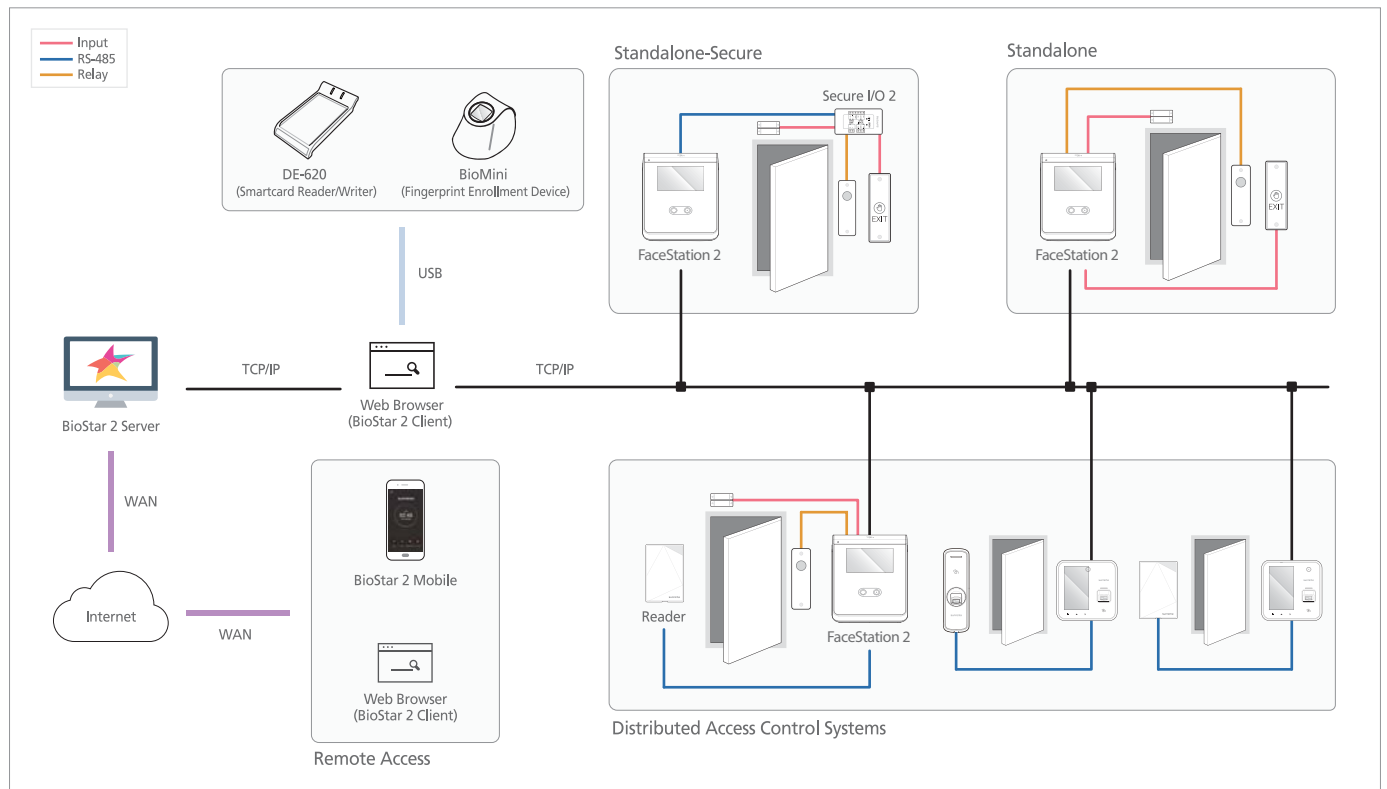
### Ergonomics & User Convenience

- Extended height range: 145cm – 210cm
- Tilt-type bracket for wheelchair persons & children
- Android 5.0 Lollipop based intuitive GUI
- Improved face enrolment procedure

## Specifications

Category	Features	FS2-D	FS2-AWB
Credential	Biometric	Face	
	RF Options	125kHz: EM 13.56MHz: MIFARE, MIFARE Plus, DESFire/EV1, FeliCa, NFC	(Includes all FS2-D's RF types) 125kHz:HID Prox 13.56MHz: iCLASS SE/SR 2.4GHz: BLE
	RF read range*	MIFARE/DESFire/iCLASS : 50 mm EM/HID Prox/Felica: 30 mm, BLE: 50 mm	
General	CPU	1.4 GHz Quad Core	
	Memory	8GB Flash + 1GB RAM	
	LCD type	4" color TFT LCD	
	LCD resolution	800 x 480 pixels	
	IR LED	140 ea	
	Sound	24 bit Voice DSP (echo cancellation)	
	Operating temperature	-20°C ~ 50°C	
	Operating humidity	0% ~ 80%, non-condensing	
	Dimensions (W x H x D)	141 mm x 164 mm x 125 mm	
	Weight	Device: 548g, Bracket: 74g (incl. washer and bolt)	
	Certificates	CE, FCC, KC, RoHS, REACH, WEEE, BT SIG	
	Power	DC 24V 2.5 A	
	Face	Image dimension	720 x 480 pixels
Capacity	Live Face Detection	Supported	
	Max. User	30,000 (1:1), 3,000(1:N)	
Interfaces	Max. Log	5,000,000 (text), 50,000 (image)	
	Wi-Fi	IEEE 802.11 b/g (FS2-AWB only)	
	Ethernet	Supported (10/100/1000 Mbps, auto MDI/MDI-X)	
	RS-485	1ch Host or Slave (Selectable)	
	Wiegand	1ch In and 1ch Out	
	TTL input	1ch Input	
	Relay	1 Relay	
	USB	USB 2.0 (Host)	
	Tamper	Supported	
	Video Phone	SIP-based VoIP (Video + Voice)	

## System Configurations



## Suprema Inc.

16F Parkview Tower, 248, Jeongjail-ro, Bundang-gu, Seongnam-si, Gyeonggi-do, 13554, Rep. of KOREA  
Tel: +82 31 783 4502 | Fax: +82 31 783 4503 | Inquiry: sales@supremainc.com

